

TLC REVERSE OSMOSIS WITH ELECTRONIC CONTROLLER

The TLC-E system offers a compact but open design that allows for easy access to components. The electronic controller offers automated control in cases of low feed pressure and allows for automatic membrane flushing. Perfect for light commercial use in all industries, the TLC-E offers reliable long term quality water production that is easy to access and maintain.

SUPERIOR ENGINEERING

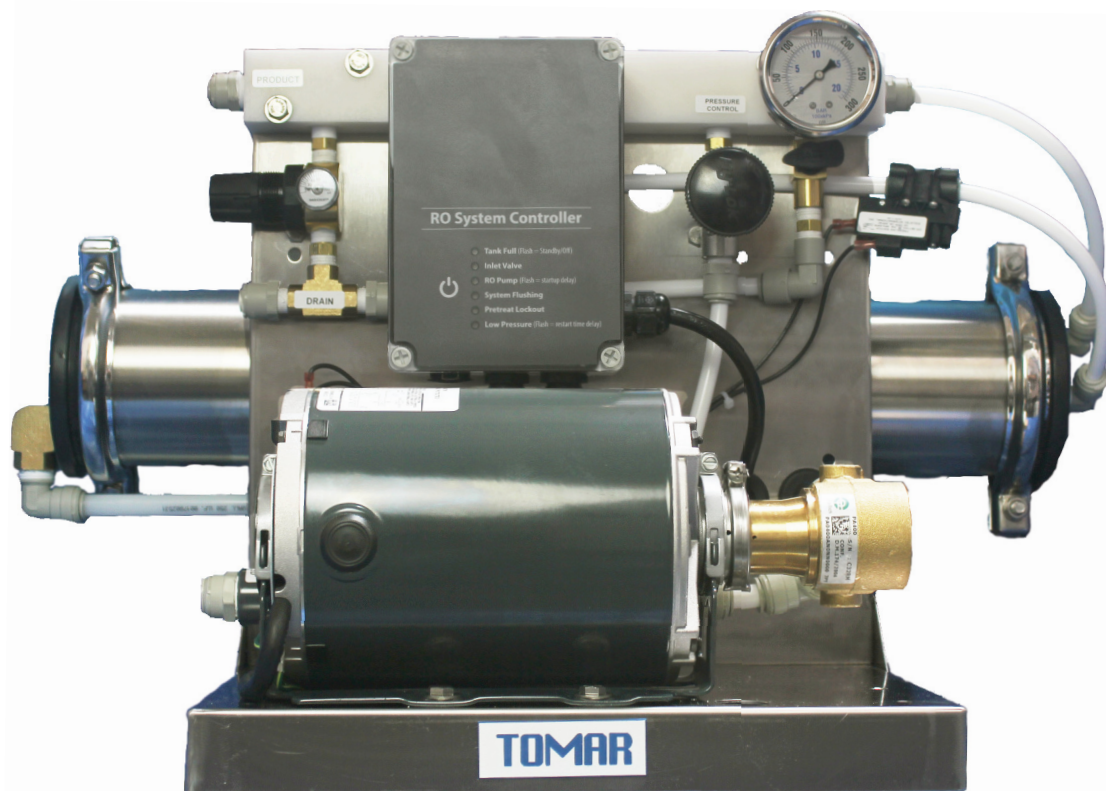
Each system is engineered with state of the art technology for optimum performance

PROVEN RELIABILITY

Tomar systems have a proven history of consistent, long-term operation

PREMIUM MATERIALS

Made only with quality materials including stainless steel vessels, frames, and superior pumps



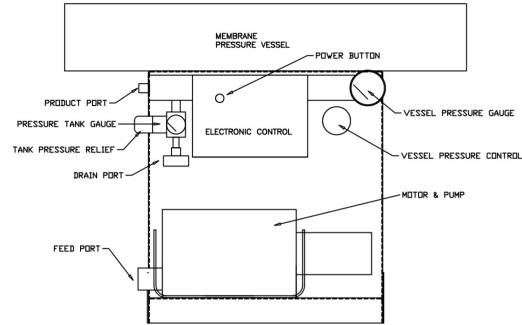
MODELS

TLC-E systems are available in the small to mid-range model sizes of 200, 400, 800, 1200 & 1500 gallons per day (GPD) product water output.

CONTACT US TO LEARN MORE OR FIND A DEALER NEAR YOU

STANDARD FEATURES

- **Frame/Vessel:** stainless steel
- **Membranes:** thin film composite
- **Pump:** positive displacement rotary vane pump
- **Electrical:** 110/220V 60Hz 1-phase (220V option)
- **Control Valves:** feed solenoid valve & SS recirc needle valve
- **Switches:** low feed pressure & tank pressure switches
- **Electronic Controller:** prevents damage from low feed pressure cycling, provides automatic startup & shutdown membrane flush, allows for optional product tank float switch control & pretreat lockout



OPTIONS & ACCESSORIES

- Product storage tanks
- Atmospheric tank level controls
- Repressurization system
- UV treatment
- Pre/post filters and treatment
- Wall mounting brackets
- Stainless steel pumps
- Blend valve: adds filtered water to permeate

SPECIFICATIONS

TLC-E Model	TLC-400E	TLC-800E	TLC-1200E	TLC-1500E
Capacity	0.3 GPM, 400 GPD	0.6 GPM, 800 GPD	0.8 GPM, 1200 GPD	1.1 GPM, 1500 GPD
Membranes	1 Ea. 2521	1 Ea. 4021	1 Ea. 4021	1 ea, 4040
Electrical	110/220V 60Hz 1-Phase, Max Current 10.4A @120V, 5.2A @220V			
Connections Feed/Drain/Product	1/2" Quick Connect Fittings			
Nominal Recovery (with Recirc Valve)	40 to 60%			
Typical TDS Rejection	98%			
Motor Rating	1/3 HP, 1725 RPM, Drip Proof, Thermally Protected	3/4 HP, 1725 RPM, Drip Proof, Thermally Protected		
System Weight Approx. (Dry)	55lbs.	60 lbs.	60 lbs.	65 lbs.
System Dimensions	28"W x 8"D x 12"H	30"W x 8"D x 14"H	30"W x 8"D x 14"H	45"W x 8"D x 14"H
Production rate and TDS rejection are based on membrane performance after 24 hours at 115 psi net operating pressure, 77F, pH 7.5, 15% recovery on feed water containing 1000ppm TDS. Flow tolerance is +/- 15% Potential membrane foulants such as excessive Iron and Manganese must be removed from the feed stream prior to the system.				

OPERATING PARAMETERS

Nominal/Max Operating Pressure	150/200 psi	Feed pH	2-11
		Feed Chlorination	Dechlorination reqd. if <0.1 ppm
Max Feed Temp	113F	Max Feed TDS	2500 ppm